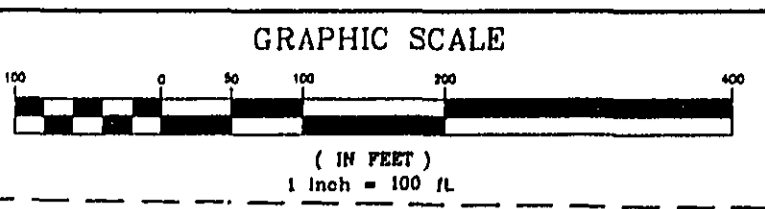


28  
7-6



(AN ALACHUA COUNTY SCENIC ROAD)  
COUNTY ROAD NO. 232 (MILLHOPPER ROAD) (RIGHT OF WAY VARIES)

CURVE DATA

NUMERIC	R	L	Δ	PT	CD	LC	FT	CD
C1	1057.33'	143.88'	121.53'	N 02°56'46" W	42.95'			
C2	1057.33'	143.88'	121.53'	S 00°00'00" W	42.95'			
C3	1057.33'	143.88'	121.53'	S 00°00'00" W	42.95'			
C4	1057.33'	143.88'	121.53'	N 02°56'46" E	42.95'			
C5	1057.33'	143.88'	121.53'	N 02°56'46" E	42.95'			
C6	1057.33'	143.88'	121.53'	S 00°00'00" W	42.95'			
C7	1057.33'	143.88'	121.53'	S 00°00'00" W	42.95'			
C8	1057.33'	143.88'	121.53'	N 02°56'46" E	42.95'			
C9	1057.33'	143.88'	121.53'	N 02°56'46" E	42.95'			
C10	1057.33'	143.88'	121.53'	S 00°00'00" W	42.95'			
C11	1057.33'	143.88'	121.53'	S 00°00'00" W	42.95'			
C12	1057.33'	143.88'	121.53'	N 02°56'46" E	42.95'			
C13	1057.33'	143.88'	121.53'	N 02°56'46" E	42.95'			
C14	1057.33'	143.88'	121.53'	S 00°00'00" W	42.95'			
C15	1057.33'	143.88'	121.53'	S 00°00'00" W	42.95'			
C16	1057.33'	143.88'	121.53'	N 02°56'46" E	42.95'			
C17	1057.33'	143.88'	121.53'	N 02°56'46" E	42.95'			
C18	1057.33'	143.88'	121.53'	S 00°00'00" W	42.95'			
C19	1057.33'	143.88'	121.53'	S 00°00'00" W	42.95'			
C20	1057.33'	143.88'	121.53'	N 02°56'46" E	42.95'			
C21	1057.33'	143.88'	121.53'	N 02°56'46" E	42.95'			
C22	1057.33'	143.88'	121.53'	S 00°00'00" W	42.95'			
C23	1057.33'	143.88'	121.53'	S 00°00'00" W	42.95'			
C24	1057.33'	143.88'	121.53'	N 02°56'46" E	42.95'			
C25	1057.33'	143.88'	121.53'	N 02°56'46" E	42.95'			
C26	1057.33'	143.88'	121.53'	S 00°00'00" W	42.95'			
C27	1057.33'	143.88'	121.53'	S 00°00'00" W	42.95'			
C28	1057.33'	143.88'	121.53'	N 02°56'46" E	42.95'			
C29	1057.33'	143.88'	121.53'	N 02°56'46" E	42.95'			
C30	1057.33'	143.88'	121.53'	S 00°00'00" W	42.95'			
C31	1057.33'	143.88'	121.53'	S 00°00'00" W	42.95'			
C32	1057.33'	143.88'	121.53'	N 02°56'46" E	42.95'			
C33	1057.33'	143.88'	121.53'	N 02°56'46" E	42.95'			
C34	1057.33'	143.88'	121.53'	S 00°00'00" W	42.95'			
C35	1057.33'	143.88'	121.53'	S 00°00'00" W	42.95'			
C36	1057.33'	143.88'	121.53'	N 02°56'46" E	42.95'			
C37	1057.33'	143.88'	121.53'	N 02°56'46" E	42.95'			
C38	1057.33'	143.88'	121.53'	S 00°00'00" W	42.95'			
C39	1057.33'	143.88'	121.53'	S 00°00'00" W	42.95'			
C40	1057.33'	143.88'	121.53'	N 02°56'46" E	42.95'			
C41	1057.33'	143.88'	121.53'	N 02°56'46" E	42.95'			
C42	1057.33'	143.88'	121.53'	S 00°00'00" W	42.95'			
C43	1057.33'	143.88'	121.53'	S 00°00'00" W	42.95'			
C44	1057.33'	143.88'	121.53'	N 02°56'46" E	42.95'			
C45	1057.33'	143.88'	121.53'	N 02°56'46" E	42.95'			
C46	1057.33'	143.88'	121.53'	S 00°00'00" W	42.95'			
C47	1057.33'	143.88'	121.53'	S 00°00'00" W	42.95'			
C48	1057.33'	143.88'	121.53'	N 02°56'46" E	42.95'			
C49	1057.33'	143.88'	121.53'	N 02°56'46" E	42.95'			
C50	1057.33'	143.88'	121.53'	S 00°00'00" W	42.95'			
C51	1057.33'	143.88'	121.53'	S 00°00'00" W	42.95'			
C52	1057.33'	143.88'	121.53'	N 02°56'46" E	42.95'			
C53	1057.33'	143.88'	121.53'	N 02°56'46" E	42.95'			
C54	1057.33'	143.88'	121.53'	S 00°00'00" W	42.95'			
C55	1057.33'	143.88'	121.53'	S 00°00'00" W	42.95'			
C56	1057.33'	143.88'	121.53'	N 02°56'46" E	42.95'			
C57	1057.33'	143.88'	121.53'	N 02°56'46" E	42.95'			
C58	1057.33'	143.88'	121.53'	S 00°00'00" W	42.95'			
C59	1057.33'	143.88'	121.53'	S 00°00'00" W	42.95'			
C60	1057.33'	143.88'	121.53'	N 02°56'46" E	42.95'			
C61	1057.33'	143.88'	121.53'	N 02°56'46" E	42.95'			
C62	1057.33'	143.88'	121.53'	S 00°00'00" W	42.95'			
C63	1057.33'	143.88'	121.53'	S 00°00'00" W	42.95'			
C64	1057.33'	143.88'	121.53'	N 02°56'46" E	42.95'			
C65	1057.33'	143.88'	121.53'	N 02°56'46" E	42.95'			
C66	1057.33'	143.88'	121.53'	S 00°00'00" W	42.95'			
C67	1057.33'	143.88'	121.53'	S 00°00'00" W	42.95'			
C68	1057.33'	143.88'	121.53'	N 02°56'46" E	42.95'			
C69	1057.33'	143.88'	121.53'	N 02°56'46" E	42.95'			
C70	1057.33'	143.88'	121.53'	S 00°00'00" W	42.95'			
C71	1057.33'	143.88'	121.53'	S 00°00'00" W	42.95'			
C72	1057.33'	143.88'	121.53'	N 02°56'46" E	42.95'			
C73	1057.33'	143.88'	121.53'	N 02°56'46" E	42.95'			
C74	1057.33'	143.88'	121.53'	S 00°00'00" W	42.95'			
C75	1057.33'	143.88'	121.53'	S 00°00'00" W	42.95'			
C76	1057.33'	143.88'	121.53'	N 02°56'46" E	42.95'			
C77	1057.33'	143.88'	121.53'	N 02°56'46" E	42.95'			
C78	1057.33'	143.88'	121.53'	S 00°00'00" W	42.95'			
C79	1057.33'	143.88'	121.53'	S 00°00'00" W	42.95'			

**BUILDING SETBACK REQUIREMENTS**

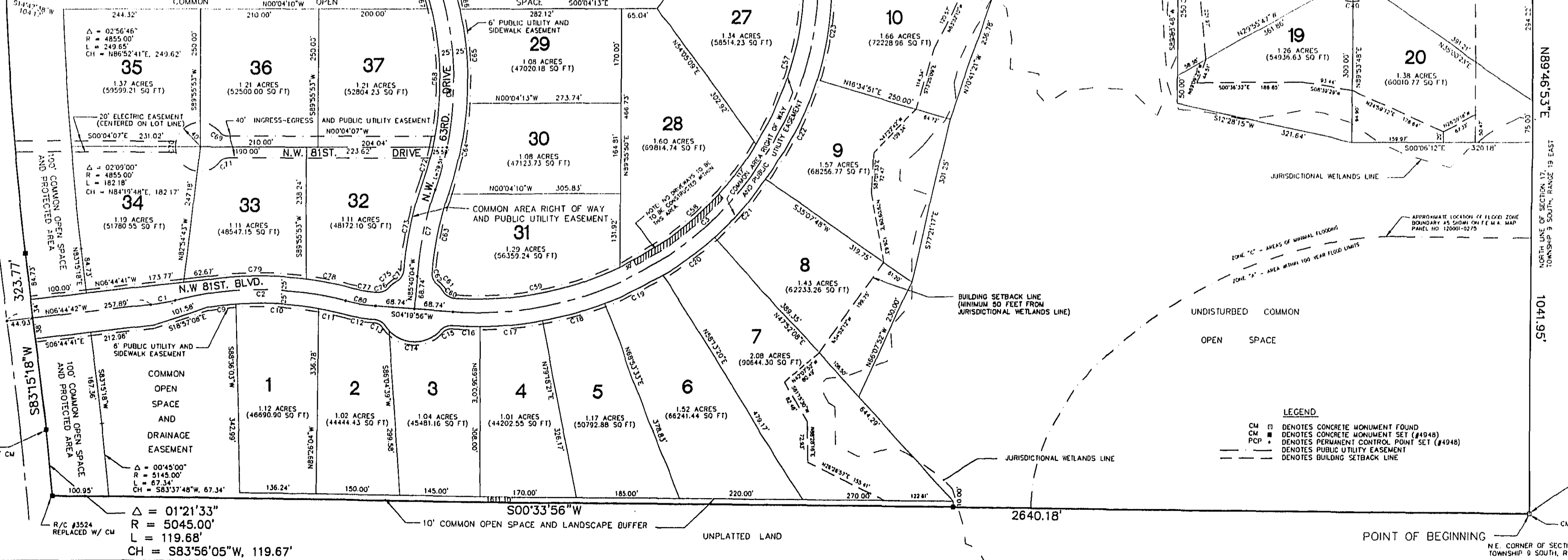
**PRINCIPAL BUILDING:**

STREET FRONT: 20 FEET  
 REAR: 20 FEET (UNLESS NOTED)  
 STREET SIDE: 15 FEET  
 INTERIOR SIDE: 15 FEET

**ACCESSORY BUILDING:**

REAR: 20 FEET (UNLESS NOTED)  
 INTERIOR SIDE: 15 FEET

Δ = 01°17'12"  
 R = 4955.00'  
 L = 111.27'



Δ = 01°21'33"  
 R = 5045.00'  
 L = 119.68'  
 CH = S83°56'05"W, 119.67'

**LEGEND**

CM □ DENOTES CONCRETE MONUMENT FOUND  
 CM ■ DENOTES CONCRETE MONUMENT SET (#4048)  
 PCP ■ DENOTES PERMANENT CONTROL POINT SET (#4048)  
 --- DENOTES PUBLIC UTILITY EASEMENT  
 - - - DENOTES BUILDING SETBACK LINE

**SAN FELASCO ESTATES UNIT NO. 1**  
 A CLUSTER DEVELOPMENT  
 SITUATED IN SECTION 17, TWP. 9 S., RGE. 19 E.  
 ALACHUA COUNTY, FLORIDA

**CHARLES D. SAPP**  
 CONSULTING ENGINEER - LAND SURVEYOR  
 4051 N.W. 43RD STREET, SUITE 31  
 GAINESVILLE, FLORIDA, 32606  
 (352) 336-3555

UNPLATTED LAND (SAN FELASCO STATE PRESERVE)

UNPLATTED LAND

UNPLATTED LAND